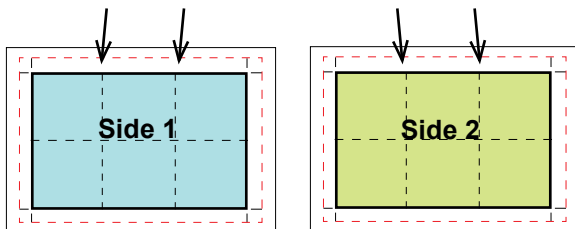


Double-sided Brochure

SUPPLIES

Studio Tac ruler
X-acto blade pencil
bone folder

Mark location of folds with a pencil.

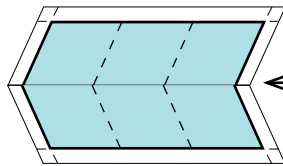


Not all printers print double-sided very well, often the registration is off. So if you need to create a double-sided brochure, here are some tips:

1. Print out both sides of your brochure (with crop marks). Trim to the outside of the crop marks of each page.

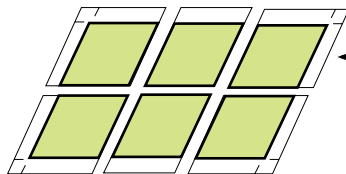
Side 1 will remain whole and **Side 2** will be cut out.

2. Apply Studio Tac to the back of **Side 2**.



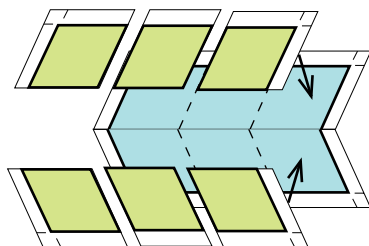
Fold Side 1 on the creases.

3. Measure and mark on your pages where the folds should be. On **Side 1** score the fold with the tip of the bone folder, then crease and tighten the fold. Repeat for all folds.



Trim sections, leaving outside crop marks.

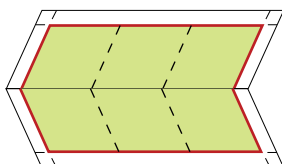
4. Measure and mark where the folds should be on **Side 2**. Make sure the Studio Tac is applied before you cut. Leaving the outside of your print (with crop marks) intact, trim each section of brochure separately.



Apply Side 2 sections to Side 1.

5. Now peel off the Studio Tac and apply it to the back of **Side 1**. The fold will be your guide for alignment. DO NOT overlap the **Side 2** section with the fold. This method will allow the brochure to bend properly without pulling.

6. Repeat **Step 5** for each section.



Trim brochure at crop marks.

7. Once all sections are applied, trim brochure on the crop marks. Now you are finished.